

Home Blu-Ray and DVD Player Instructions



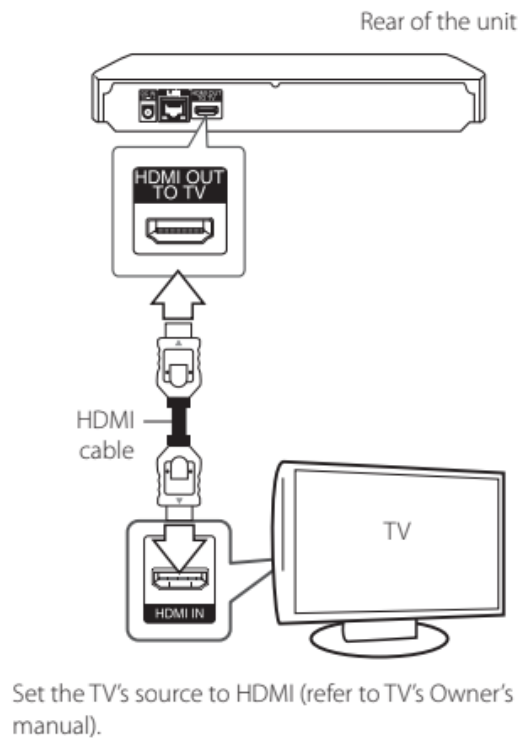
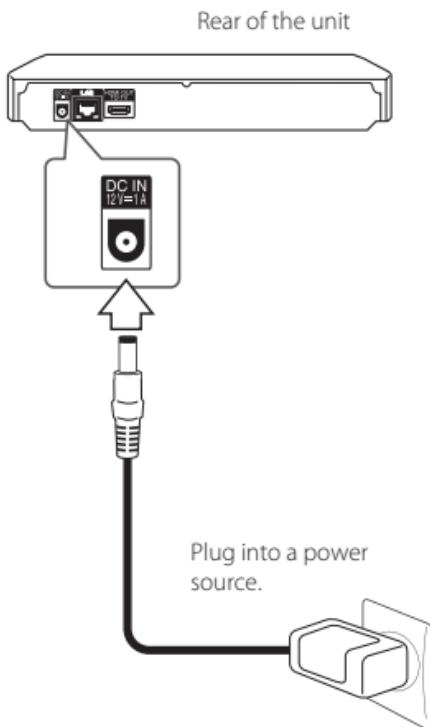
LG BP175 Blu-Ray DVD Player

Instructions

Connect

Place on a relatively flat surface near the screen you connected it to.

Plug the included power adapter into a wall outlet and its other end into the DC IN plug on the back left of the player.



(The player should not automatically turn on once both ends of the power adapter are connected.)

Also plug the included HDMI cable into the HDMI OUT TO TV plug on the back left of the player. Plug the other end of this included cable into an HDMI IN input plug on your television/display monitor. (Pictured above.)

Power on

Press the \mathcal{O} /I button on the front right of the player, or the \mathcal{O} (power) button on the remote control. A green light between the Blu-Ray/DVD drive and the \blacktriangle (eject) button should light up and stay on.

Switch TV input

Using the original remote that came with the television/display (not the included LG BLU-RAY DISC PLAYER remote control) or buttons on a monitor, change the source to the label/name of the input - usually labeled something like HDMI, HDMI1, HDMI2, etc.

(When the player is properly connected to both power and a TV and that TV is powered on, and this player has been powered on, the TV may automatically switch to this player.)

Eject disc tray and insert/remove discs

- Once the device is fully powered on (see Power on above) press the \blacktriangle (eject) button on the front right of the player, or the \blacktriangle OPEN/CLOSE button on the top right corner of the remote control. The screen will go gray when the disc drive has been opened.
- Wait until the disc drive has fully opened before inserting or removing discs.
- Make sure all discs inserted are flat and in the center of the disc tray.
- Once discs are in the proper position, press the \blacktriangle (eject) button on the front right of the player, or the \blacktriangle OPEN/CLOSE button on the top right corner of the remote control to close the disc tray. You may also give the open disc tray a gentle push in until it automatically retracts.
 - If you accidentally did not insert any disc but closed the tray, a message will say that the device did not find a disc. After a few seconds, it will return to the Home menu.

Home menu

The menu appears once the player is fully turned on and while no discs are inserted.

The top section lists main options. $\square\square$ to choose from options within this section. Currently highlighted sections get larger when selected.

The bottom section lists shortcuts within main options. $\square\square$ to choose from options within this section. Press Enter to choose an option from the bottom shortcuts.

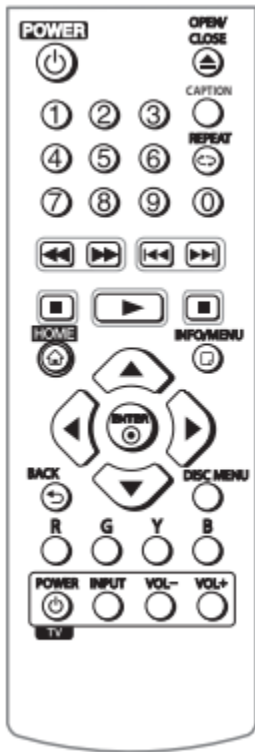
If anything unexpected happens or if any messages appear, try the \triangle HOME button to escape.

Remote control

Once the player is on and a video disc is inserted, content should play automatically. Use remote control buttons to control playback.

Hold the control flat, parallel to the floor. Point it directly at the player. A line of sight is required for the remote control to work. The remote sensor is between the power indicator light and the ▲ eject button.

Remote control buttons



- POWER - turn the player on or off
- OPEN/CLOSE - open/close the drive
- 0-9 - Selects numbered options in a menu
- CAPTION - Turns on or off closed caption functions when available
- REPEAT - Repeats a desired section/sequence
- << - rewind
- >> - fast forward
- |<< - skip back
- >>| - skip forward
- || - pause (just above HOME, otherwise perfect picture has wrong icon there)
- > - play
- ■ - stop
- HOME - Displays the home menu
- INFO/MENU - Displays or exits on-screen information
- directional pad (d-pad) buttons - select options, navigate all system and disc menus - selected options will likely be colored or highlighted
- ENTER - once you've selected an option, press this button to confirm your choice and play content or enter sub-menus
- BACK - go back a level in menus
- DISC MENU - Exit out of playing content or menu sections to go back to the menu of a disc.
- Colored Red R, Green G, Yellow Y, and Blue B buttons - Use these buttons to navigate Blu-Ray disc menus, they may also be used as shortcut buttons for specific menus.

Battery installation

Do not play with the battery tray cover on the back of the remote. One AAA battery is installed. If it runs out of power, you can replace the battery.



Remove the battery cover on the rear of the Remote Control, and insert the R03 (size AAA) battery with and matched correctly.

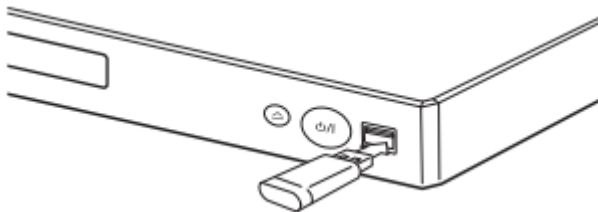
Unskippable sections of DVD and Blu-Ray discs

Player remote control buttons like >> and >>| sometimes allow you to fast forward/skip through content on discs. Manufacturers of major motion picture movie discs can prevent this in some situations. If you see Ⓞ that means these features are disabled at the current time. Unskippable content will play, and then the disc will automatically move on to the next video content or disc menu section.

Using the USB-A plug

Connect a USB-A flash drive or hard drive to the front right USB-A plug.

Use the remote control △ HOME button to get to the main menu of the player. Select the type of media using the remote control, browse through flash drive/hard drive folders and select something to view/play. Press □ BACK or △ HOME to exit out.



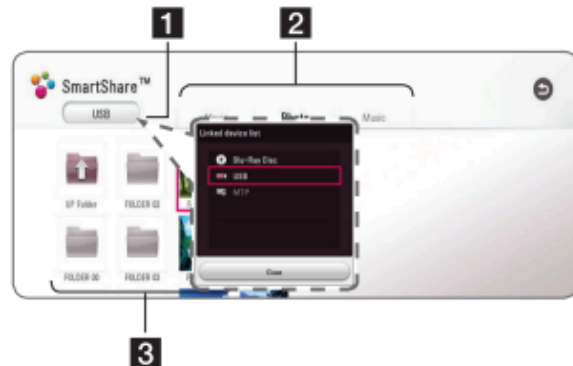
When you connect the USB device on the HOME menu, the player plays an audio file contained in the USB storage device automatically. If the USB storage device is containing various types of files, a menu for the file type selection will appear.

File loading may take few minutes depending on the number of content stored in the USB storage device. Press ENTER (⊙) while [Cancel] is selected to stop loading.

2. Press HOME (🏠).
3. Select [Movie], [Photo] or [Music] using ◀/▶, and press ▼.
4. Select Disc or USB and press ENTER (⊙).



- 1 [Movie] - Plays video content.
- 2 [Photo] - Plays photo content.
- 3 [Music] - Plays audio content.



- 1 Displays all linked devices.
- 2 Displays video, photo or audio content.
- 3 Displays the file or folder on linked device.

5. Select a file using ▲/▼/◀/▶, and press ▶ (PLAY) or ENTER (⊙) to play the file.

Power off and safely unplug

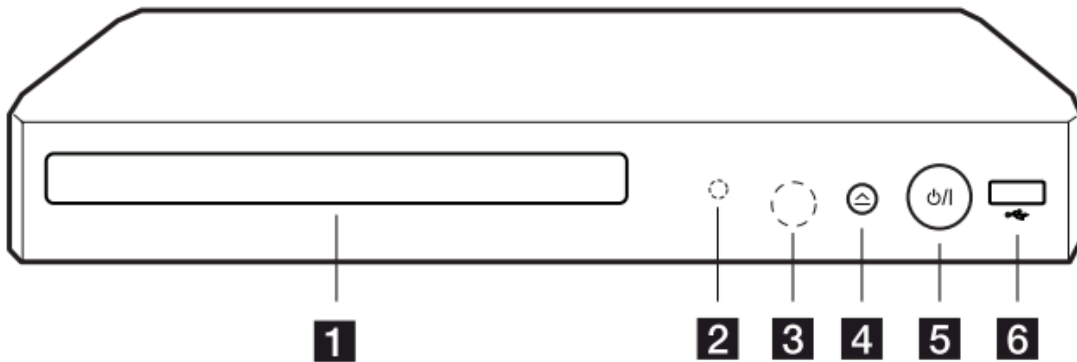
First make sure to remove any discs inserted.

Press the ϕ /I button on the front right of the player, or the ϕ (power) button on the remote control.

The green light between the Blu-Ray/DVD drive and the \triangle (eject) button should turn off.

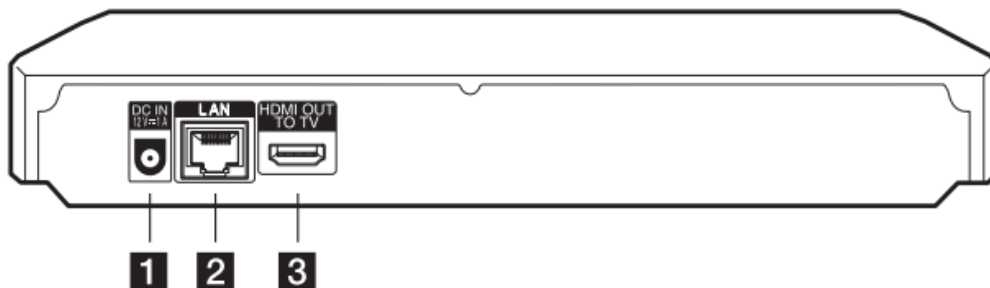
Once the player stops making noise and the green light is off, you can safely unplug either end of its power adapter.

Diagrams



- 1** Disc Tray
- 2** Power Indicator
- 3** Remote Sensor

- 4** \triangle (OPEN / CLOSE)
- 5** ϕ / I (POWER)
- 6** USB Port



- 1** DC IN 12V (AC adapter input)
- 2** LAN port

- 3** HDMI OUT